

Präsentation / Presentation

Note:

Information taken from power point slides (either literally or paraphrasedly or in terms of content) has to be quoted in the same way as that from other publications, with the usual bibliographical details indicating its source, e.g.:

„[Author]. (2020). [Title of presentation]. Presentation at the World Education Leadership Symposium Online Conference (WELSONline) 2020, hosted by the IBB of the PH Zug on September 1 – 4, 2020.“
The program is available at: WELSONline.EduLead.net

Hinweis:

Informationen, die inhaltlich, paraphrasierend oder wörtlich aus Power Point Folien entnommen werden, sind genauso zu behandeln wie Zitate aus anderen Publikationen und mit den üblichen bibliographischen Hinweisen auf die Quelle zu versehen, z.B.:

„[Autorenname]. (2020). [Titel der Präsentation]. Vortrag beim World Education Leadership Symposium Online Conference (WELSONline) 2020, veranstaltet vom IBB der PH Zug vom 1.-4.9.2020.“
Das Programm ist einsehbar unter: WELSONline.EduLead.net

World Education Leadership Symposium Online Conference (WELSONline)

Initiator und Leiter / Initiator and Organizer:

Prof. Dr. Stephan Gerhard Huber

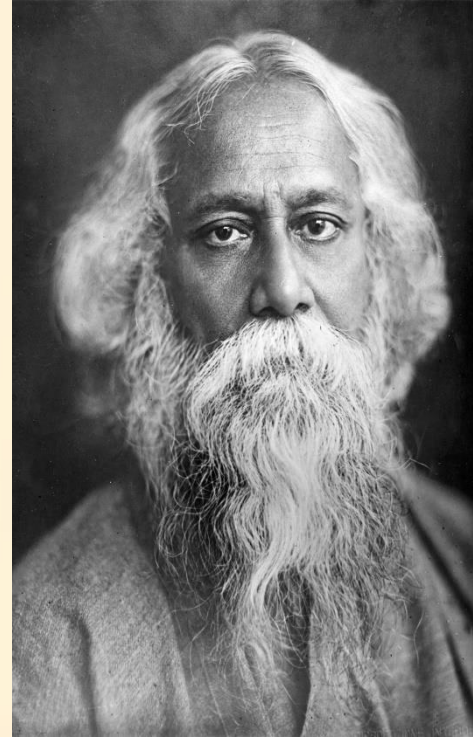
Veranstalter WELSONline 2020 (seit 2009) / Host WELSONline 2020 (since 2009):

Institut für Bildungsmanagement und Bildungsökonomie (IBB) / Institute for the Management and Economics of Education (IBB)
Pädagogische Hochschule Zug (PH Zug) / University of Teacher Education Zug (PH Zug)

Kooperationspartner / Cooperation Partners:

Schulleitungs- und Lehrerverbände, Ministerien und Behörden sowie weitere Hochschulen und Partner / Association of school leaders and teachers, ministries and authorities as well as further universities and partners

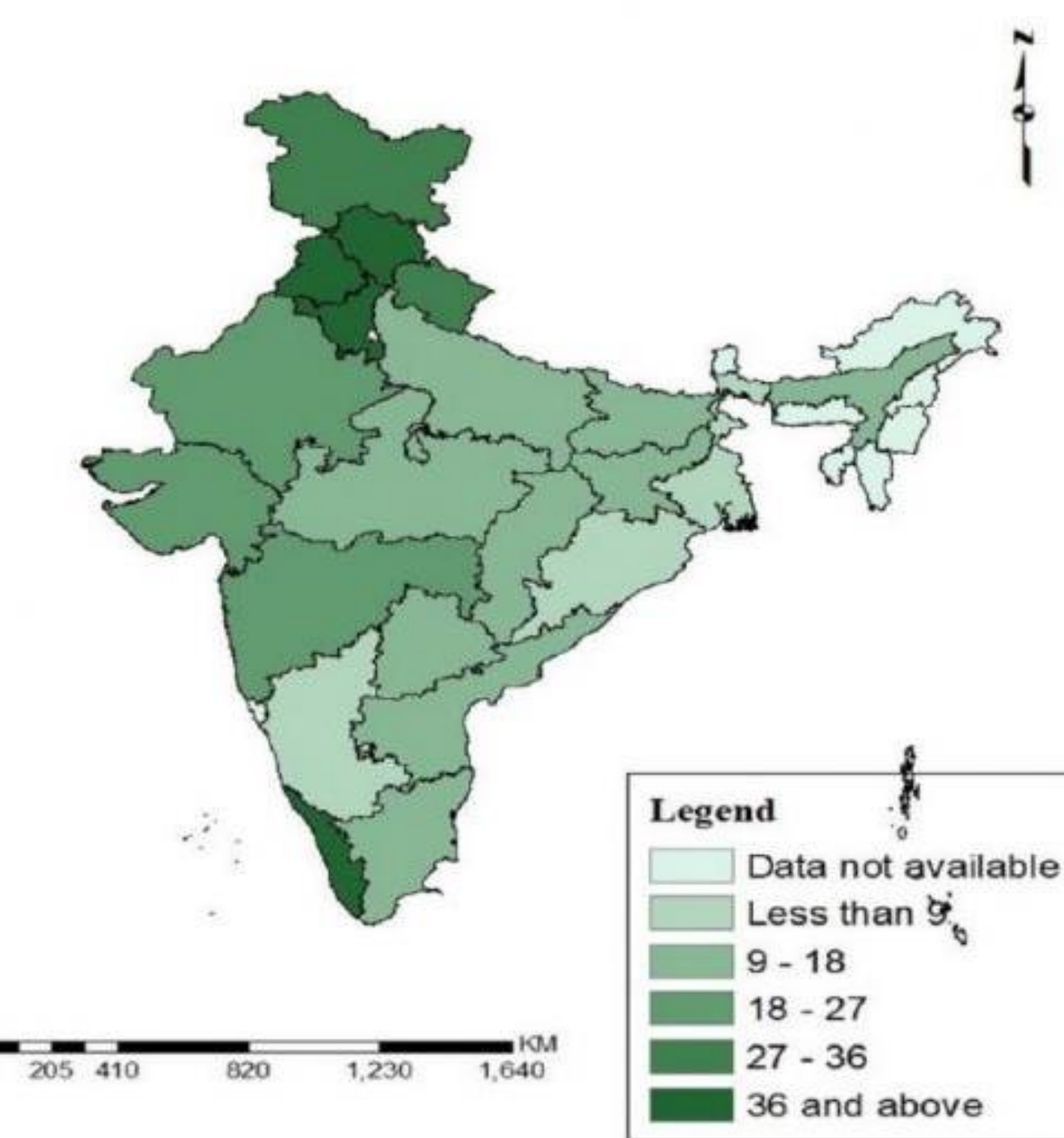
WEST BENGAL, INDIA



LEADERSHIP FOR DIGITAL LEARNING IN THE 21st CENTURY: POLICY, PERSPECTIVES AND GROUND REALITIES



Dr. Shnaoli Chakraborty Acharya
West Bengal State University,
West Bengal, India.
Connect: shnaolic@gmail.com



State wise rural households with internet facility in India (2017-18)

Source: National Service Scheme Education Survey, 2017-18

Availability of Digital Infrastructure in Indian Households

1. Computer/Laptop/Smartphone and a 4G Internet connection as well as a Television set with a DTH / Cable TV connection
2. Smartphone with 4G Network
3. Smartphone with limited internet (3G/2G) or no access to internet
4. Television set with a DTH/ Cable TV Connection
5. Radio set or basic mobile phone with FM
6. No digital device at all

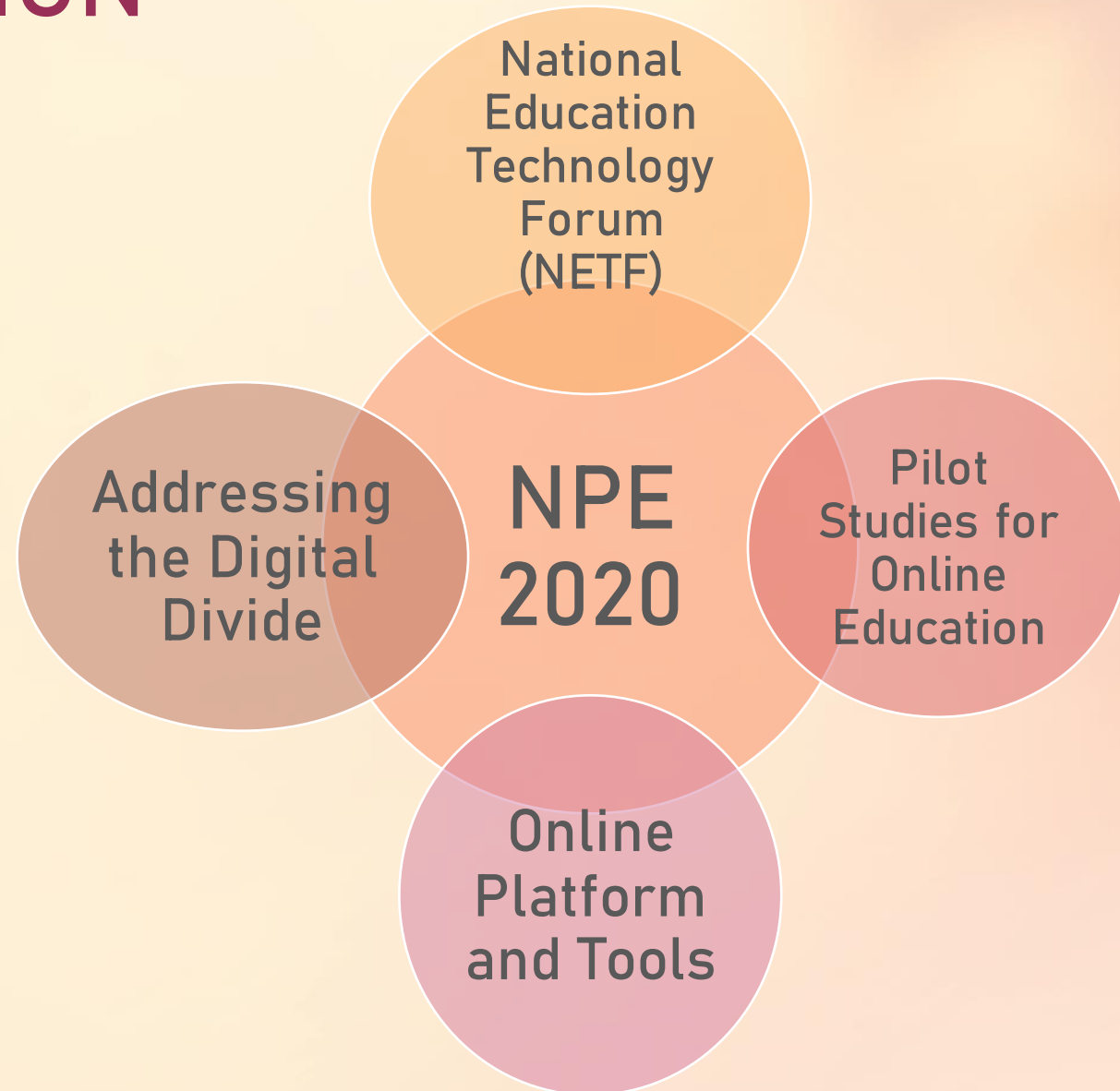
MODES OF DIGITAL LEARNING



- ❖ Online Mode : Computer/ Smartphone with internet connectivity is available.
- ❖ Partially Online Mode : Computer/ Smartphone is available but regular internet connection is not supported.
- ❖ Offline Mode : Internet connectivity is not available or available with low bandwidth. Resources shared through Television , Radio etc. platforms which do not depend on net connectivity.

DIGITAL INDIA CAMPAIGN

- Content creation, Digital Repository and Dissemination
- Training and Incentives for Teachers
- Online assessment and examinations
- Digital Infrastructure



Online Platforms and Tools

-  DIKSHA (<https://diksha.gov.in/>)
-  e- PATHSHALA (<https://epathshala.nic.in/>)
-  SWAYAM (<https://swayam.gov.in/>)
-  SWAYAM PRABHA (www.swayamprabha.gov.in)
- Shiksha Vani - On Air- Extensive use of Community Radio

Changed Vision in School Leadership....

Planning

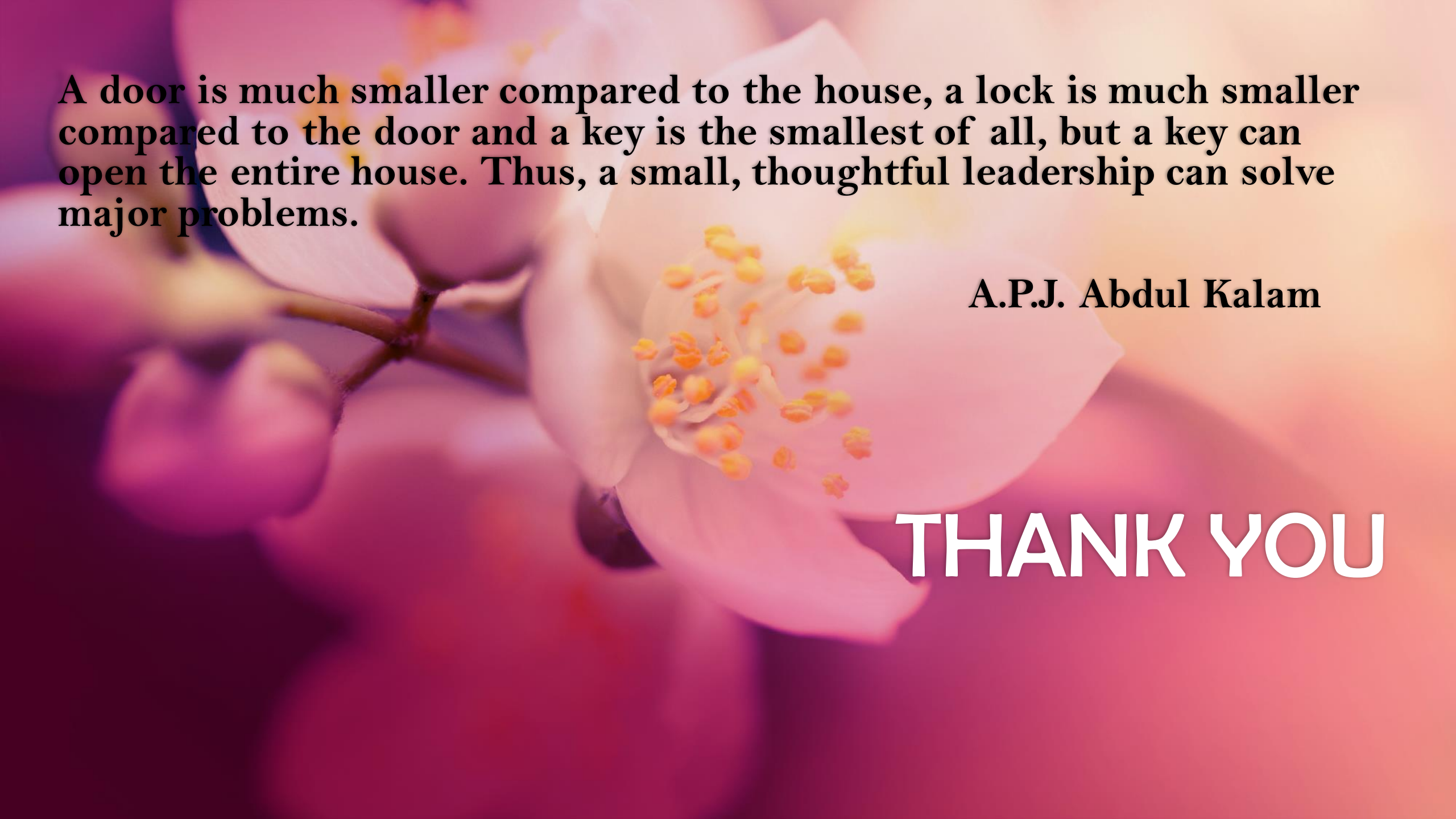
- Facilitate ICT infrastructure for teachers.
- Orientation of teachers, parents and students about using digital technology at the initial level.

Conducting informal Survey

- Consider conducting an informal survey to identify various ICT facilities available at home for each child.
- Ensure mode of communication, blended lesson plan and necessary well-being support.

Assessment

- Involve teachers and representatives of parents in chalking out modalities of digital education.
- Following “flipped classroom” model, ensure students learning by watching prerecorded videos and then coming together as a class to complete exercises and assignments, with the teacher acting as a coach.



A door is much smaller compared to the house, a lock is much smaller compared to the door and a key is the smallest of all, but a key can open the entire house. Thus, a small, thoughtful leadership can solve major problems.

A.P.J. Abdul Kalam

THANK YOU